



FOOD PACKAGING



WE PROTECT YOUR PASSION
EVERY DAY, WITH 1000 SHAPES



TECNOPRESS

Active since 1995. Tecnopress is a dynamic company that produces plastic containers for the food industry. Our policy aims to design and produce customized solutions and products to increase the value of the product on the global market.

THERMOFORMING

We obtain our products working all the main materials through the thermoforming process. Our group is able to offer to our customers the optimal solution in relation to the specific characteristics of the product to be packaged:

- extending the SHELF-LIFE of the food
- achieving the right balance between transparency and toughness of the container
- possibility to heat and freeze food directly in the container

THE PACKAGING BORN WITH THE PRODUCT

Processing stages for new products created specifically on our customer's needs:

- **PREVENTIVE ANALYSIS**
To evaluate together what type of shapes, characteristics and materials to use
- **REALIZATION OF A PROTOTYPE**
Very similar to the final product to allow an aesthetic and functional evaluation
- **DESIGN AND REALIZATION OF MOLDS**
equipment and printing systems for definitive production
- **PRODUCTION** of the agreed order
- **DELIVERY PLANNING**
with the customer with the possibility to manage also partial deliveries

APPLICATION FIELDS

FOOD PACKAGING:

GASTRONOMIC, STARTERS, OLIVE, DAIRY

CUPS PACKAGING:

SAUCES, DAIRY, DRIED FRUIT, PESTO, TOMATO SAUCES

MEAT AND FISH

FOURTH RANGE

FRESH FRUIT

DESSERT AND BAKERY

INDUSTRY APPLICATION

POSSIBILITY TO CUSTOMISE THE CONTAINER WITH OFFSET AND SHRINK SLEEVE TECHNOLOGY



THE RAW MATERIAL USED TO PRODUCE THE CONTAINERS ARE:

MONOLAYER

PP, PS, OPS, PET, PLA

MULTILAYER WITHOUT BARRIER

PP/PE, PS/PE, PET/PE

MULTILAYER WITH BARRIER

PP/EVOH/PP, PP/EVOH/PE,

PS/EVOH/PE, PET/EVOH/PE

PLA-PVOH-PLA

	MATERIALS		DIMENSIONS (mm)	
	MONOLAYER	MULTILAYER	EXTERNAL	HEIGHT
 code VR01	PP	PP-EVOH-PP	185 x 132	H 25 H 40
 code VR01C2	PP	PP-EVOH-PP	185 x 132	H 25 H 38
 code COPVR01	PP		190 x 140	
SANDWICH TRAY  code VR02	PET		182 x 115	H 30
 code COPVR02	PET		186 x 136	
 code VR03	PP PS		270 x 178	H 55
 code VR04	PP PS		268 x 178	H 30 H 68

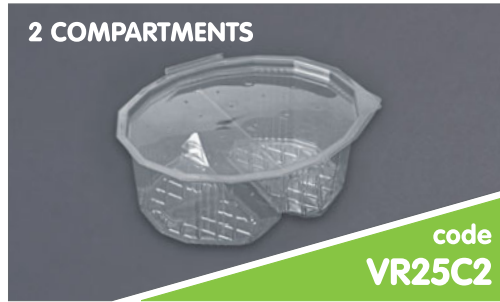
	MATERIALS		DIMENSIONS (mm)	
	MONOLAYER	MULTILAYER	EXTERNAL	HEIGHT
 <p>code VR05</p>	PET		194 x 119	H 55
 <p>code VR06</p>	PP	PP-EVOH-PP	188 x 135	H 18 H 35 H 45 H 90
 <p>code COPVR06</p>	PET		198 x 147	
 <p>code VR07</p>	PP	PP-EVOH-PP	145 x 120	H 35 H 52
 <p>code VR08</p>	PP	PP-EVOH-PP	285 x 197	H 20 H 30 H 40 H 70
 <p>code VR09</p>	PET		215 x 165	H 66
 <p>code VR10</p>	PP PS	PP-EVOH-PP	180 x 145	H 65

	MATERIALS		DIMENSIONS (mm)	
	MONOLAYER	MULTILAYER	EXTERNAL	HEIGHT
<p>2 COMPARTMENTS</p>  <p>code VR10C2</p>	PP PS	PP-EVOH-PP	180 x 145	H 70
 <p>code VR11</p>	PP	PP-EVOH-PP	169 x 120	H 20 H 30 H 40 H 50 H 60
 <p>code VR11N</p>	PP	PP-EVOH-PP	169 x 120	H 20
 <p>code VR11H</p>	PP	PP-EVOH-PP	169 x 120	H 30
<p>OCTAGONAL</p>  <p>code VR11</p>	PP	PP-EVOH-PP	169 x 120	H 45
<p>4 COMPARTMENTS</p>  <p>code VR11C4</p>	PP	PP-EVOH-PP	169 x 120	H 20
<p>2 COMPARTMENTS</p>  <p>code VR11C2</p>	PP	PP-EVOH-PP	169 x 120	H 60



MATERIALS		DIMENSIONS (mm)	
MONOLAYER	MULTILAYER	EXTERNAL	HEIGHT
PET		174 x 127	
PP	PP-EVOH-PP	133 x 74	H 27 H 45 H 70 H 90
PET		145 x 85	
PET PS	PS-EVOH-PE	227 x 104	H 48
PP	PP-EVOH-PP	215 x 185	H 27
PP	PP-EVOH-PP	302 x 190	H 35 H 65 H 72
PP	PP-EVOH-PP	263 x 162	H 25

	MATERIALS		DIMENSIONS (mm)	
	MONOLAYER	MULTILAYER	EXTERNAL	HEIGHT
 code VR20	PP	PP-EVOH-PP	213 x 138	H 25 H 48 H 38 H 55 H 40 H 65
 code VR21	PP	PP-EVOH-PP	260 x 157	H 15 H 25 H 30 H 46 H 60 H 70
 code VR22	PP	PP-EVOH-PP	267 x 183	H 20 H 34 H 50 H 68
 code VR22C2	PP	PP-EVOH-PP	267 x 183	H 40
 code VR22C4	PP	PP-EVOH-PP	267 x 183	H 60
 code COP VR18	PET		310 x 195	
 code VR19	PP	PP-EVOH-PP	263 x 162	H 15 H 20 H 42 H 50 H 60 H 70 H 95



MATERIALS		DIMENSIONS (mm)	
MONOLAYER	MULTILAYER	EXTERNAL	HEIGHT
PP	PP-EVOH-PP	160 x 130	H 20 H 26 H 36 H 46
PP		162 x 135	
PP	PP-EVOH-PP	323 x 263	H 40 H 55 H 65 H 75 H 80 H 95
PET		175 x 145	H 60
PET		173 x 145	H 60
PET		137 x 137	H 70
PP	PP-EVOH-PP	277 x 190	H 30 H 35

	MATERIALS		DIMENSIONS (mm)	
	MONOLAYER	MULTILAYER	EXTERNAL	HEIGHT
 <p>code VR28</p>	PP	PP-EVOH-PP	252 x 182	H 35
 <p>code VR29</p>	PP	PP-EVOH-PP	165 x 140	H 48
<p>HINGED TRAY</p>  <p>code VR31</p>	PET		192 x 113	H 45
<p>2 COMPARTMENTS</p>  <p>code VR32</p>	PET		160 x 128	H 46
 <p>code VR33</p>	PET PS	PS-EVOH-PE PET-EVOH-PE PET-PE	298 x 215	H 70 H 90
 <p>code VR34</p>	PET		178 x 178	H 30
 <p>code VR35</p>	PP	PP-EVOH-PP	249 x 180	H 35 H 45 H 60

TRAY WITH SEPARATOR



code
VR35S

7 COMPARTMENTS: 6 mini hamburger
+ sauces



code
VR35C7



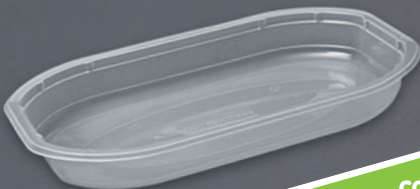
code
VR36



code
COPVR36



code
VR37



code
VR38





code
VR39



MATERIALS		DIMENSIONS (mm)	
MONOLAYER	MULTILAYER	EXTERNAL	HEIGHT
PP	PP-EVOH-PP	249 x 180	H 35
PP	PP-EVOH-PP	249 x 180	H 30
PP	PP-EVOH-PP	108 x 108	H 35 H 50 H 75
PET		114 x 114	H 10
PP	PP-EVOH-PP	225 x 117	H 20 H 25 H 45
PP	PP-EVOH-PP	262 x 152	H 32 H 45
PS	PP-EVOH-PP	240 x 180	H 55

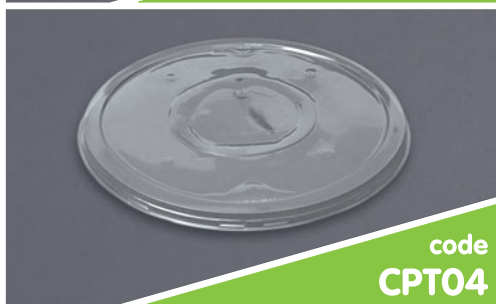
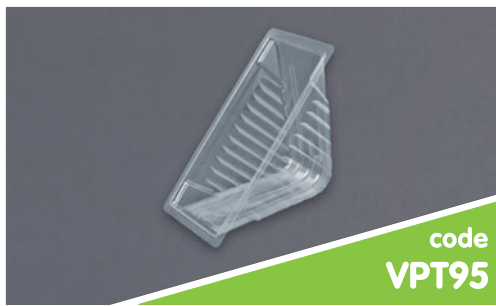
	MATERIALS		DIMENSIONS (mm)	
	MONOLAYER	MULTILAYER	EXTERNAL	HEIGHT
 <p>code VR40</p>	PS PP PET	PP-EVOH-PP	250 x 180	H 55 H 70 H 110
 <p>code COPVR40</p>	PET		260 x 187	
<p>SANDWICH TRAY</p>  <p>code VR41</p>	PET		212 x 118	H 32
 <p>code VR42</p>	PET		228 x 108	H 45
 <p>code VR44</p>	PP	PP-EVOH-PP	230 x 145	H 20 H 40 H 50 H 65
<p>HAMBURGER TRAY</p>  <p>code VR44H</p>	PP	PP-EVOH-PP	230 x 145	H 28
<p>SANDWICH TRAY</p>  <p>code VR44C2</p>	PP	PP-EVOH-PP	230 x 245	H 30



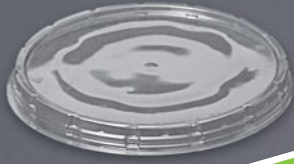
MATERIALS		DIMENSIONS (mm)	
MONOLAYER	MULTILAYER	EXTERNAL	HEIGHT
PP	PP-EVOH-PP	230 x 145	H 30
PP	PP-EVOH-PP	230 x 145	H 50
PP	PP-EVOH-PP	230 x 145	H 50
PET PP	PP-EVOH-PP	230 x 145	H 30
PP	PP-EVOH-PP	81 x 65	H 21 H 45
PP	PP-EVOH-PP	135 x 83	H 40
PP	PP-EVOH-PP	190 x 134	H 35 H 65

	MATERIALS		DIMENSIONS (mm)	
	MONOLAYER	MULTILAYER	EXTERNAL	HEIGHT
 <p>code VR50C2</p>	PP	PP-EVOH-PP	190 x 139	H 28
<p>3 WURSTEL TRAY</p>  <p>code VR50-3W</p>	PP	PP-EVOH-PP	190 x 134	H 36
<p>4 WURSTEL TRAY</p>  <p>code VR50-4W</p>	PP	PP-EVOH-PP	190 x 134	H 30
 <p>code VR51</p>	PET		184 x 127	H 36 H 43
<p>2 HAMBURGER TRAY</p>  <p>code VR52-2H</p>	PP	PP-EVOH-PP	267 x 130	H 25
 <p>code VR54</p>	PP	PP-EVOH-PP	117 x 117	H 45 H 55
 <p>code COPVR54</p>	PET		123 x 123	

	MATERIALS		DIMENSIONS (mm)	
	MONOLAYER	MULTILAYER	EXTERNAL	HEIGHT
 code VR55	PP PET	PET-EVOH-PP PET-EVOH-PE	160 x 160	H 25
 code VR56	PP PET	PET-EVOH-PP	112 x 112	H 40
 code COPVR56	PET		116 x 116	H 15
 code VR58	PP	PP -EVOH-PP	110 x 200	H 30
 code VR500 VR600 VR750 VR1000	PET PET PET PET		140 x 125 190 x 145 190 x 145 190 x 145	H 55 H 50 H 55 H 65
 code VT500 VT750 VT1000	PET PET PET		160 x 135 200 x 170 200 x 170	H 55 H 55 H 70
 code VPT85	PS	PS -EVOH-PE	182 x 62	H 85



MATERIALS		DIMENSIONS (mm)	
MONOLAYER	MULTILAYER	EXTERNAL	HEIGHT
PS	PS -EVOH-PE	190 x 90	H 93
PP PET	PP-EVOH-PP	285 x 245	H 27 H 50
PP	PP-EVOH-PP	Ø 300	H 27
PET		Ø 305	
PP	PP-EVOH-PP	235 x 150	H 58
		INTERNAL	INTERNAL
		210 x 125	H 48
PP	PP-EVOH-PP	316 x 130	H 48
		INTERNAL	INTERNAL
		299 x 111	H 38
PP	PP-EVOH-PP	Ø 190	H 65



code
CT06

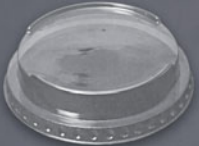


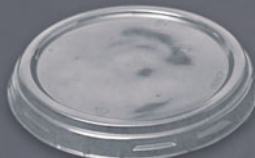





code
T13

MATERIALS		DIMENSIONS (mm)	
MONOLAYER	MULTILAYER	EXTERNAL	HEIGHT
PET		Ø 199	H 16
PS PET		Ø 230	H 70



	MATERIALS		DIMENSIONS (mm)	
	MONOLAYER	MULTILAYER	EXTERNAL	HEIGHT
 <p>code T01</p>	PP	PP-EVOH-PP	Ø 78	H 45 H 55 H 85
 <p>code CT01</p>	PS PP PET		Ø 86	
 <p>code T04</p>	PS PP	PP-EVOH-PP	Ø 80	H 45 H 55
 <p>code CT04</p>	PET		Ø 227	
 <p>code T07</p>	PP	PP-EVOH-PP	Ø 93	H 25 H 40 H 70 H 115
<p>ROUNDED</p>  <p>code T07</p>	PP	PP-EVOH-PP	Ø 93	H 35 H 57
 <p>code CT07</p>	PET		Ø 100	

	MATERIALS		DIMENSIONS (mm)	
	MONOLAYER	MULTILAYER	EXTERNAL	HEIGHT
 code CT95	PET		Ø 100	
 code T08	PP	PP-EVOH-PP	Ø 123	H 25 H 35 H 45 H 52 H 60 H 94
 code CT08R	PET		Ø 129	
 code CT08D	PET		Ø 129	
 code CT08	PET		Ø 126	
 code T09	PP	PP-EVOH-PP	Ø 100	H 54
 code CT09	PET PS		Ø 107	

	MATERIALS		DIMENSIONS (mm)	
	MONOLAYER	MULTILAYER	EXTERNAL	HEIGHT
 code T11	PP	PP-EVOH-PP	Ø 125	H 65
 code CT11	PS PET		Ø 132	
 code T12	PP	PP-EVOH-PP	Ø 108	H 40 H 57 H 67 H 77 H 92
GROOVED  code T12R	PP	PP-EVOH-PP	Ø 108	H 92
DODECAGONAL  code T12D	PP	PP-EVOH-PP	Ø 108	H 67
 code CT12EST	PET		Ø 114	H 16
 code CT12INT	PET		Ø 95	H 18

	MATERIALS		DIMENSIONS (mm)	
	MONOLAYER	MULTILAYER	EXTERNAL	HEIGHT
 code CB01	PET		Ø 92	
 code CB02 CB03 CB04 CB05 CB06 CB07	PET PET PET PET PET PET		Ø 91 Ø 103 Ø 109 Ø 120 Ø 130 Ø 136	H 41 H 41 H 42 H 43 H 45 H 45
 code T14	PP	PP-EVOH-PP	Ø 65	H 30
 code T15	PET	PET-EVOH-PE	Ø 228	H 20
 code T16	PP	PP-EVOH-PP	Ø 73	H 55
 code CT16	PET		Ø 79	



code
VAL-86-L6



code
EGG TRAYS

PIZZA TRAY



code
CP1



code
TEE011



code
TEE001



code
TE002



code
TE0021

MATERIALS		DIMENSIONS (mm)	
MONOLAYER	MULTILAYER	EXTERNAL	HEIGHT
PS		290 x 220	H 86
PS PP		315 x 105	H 70
PP		Ø int. 320	H 35
PS		195 x 110	H 70
PS		205 x 145	H 70
PS		220 x 230	H 70
PS		250 x 260	H 70

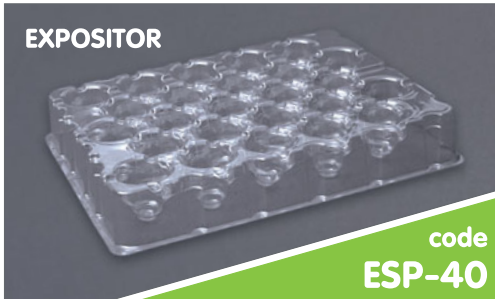


code
PARTY PLATES



CANS TRAY

code
VR43



EXPOSITOR

code
ESP-40

MATERIALS		DIMENSIONS (mm)	
MONOLAYER	MULTILAYER	EXTERNAL	HEIGHT
PS		274 x 210	H 24
	PET	167 x 117	H 20
	PET	270 x 210	H 40



LINEA C - MODULAR CONTAINERS



code
C20



code
C35



code
C60

MATERIALS	DIMENSIONS (mm)	
	MONOLAYER	EXTERNAL
PET	187 x 115	H 20

PET	187 x 115	H 35
-----	-----------	------

PET	187 x 115	H 60
-----	-----------	------

LINEA F - ROUND FRUITS



code
F2-66
F2-80
F2-90

PET	95 x 180	H 33
PET	95 x 180	H 40
PET	95 x 180	H 45



code
F4-15
F4-23
F4-51
F4H25
F4H31

PET	185 x 185	H 42,5
PET	185 x 185	H 40
PET	185 x 185	H 37,5
PET	185 x 185	H 25
PET	185 x 185	H 36



code
F6-15
F6-22
F6-27

PET	182 X 280	H 34
PET	182 X 280	H 42,5
PET	182 X 280	H 40



code
F9-22
F9-27

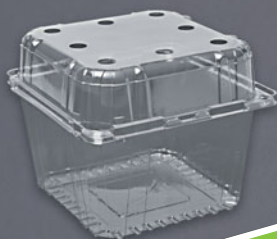
PET	260 X 290	H 40
PET	260 X 290	H 37,5



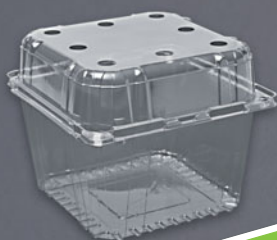
code
TF-7



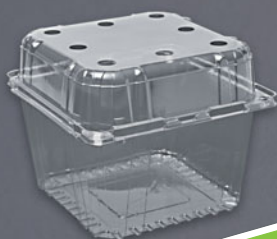
code
TF-9



code
TF-12



code
TF-15



code
TF-16



FRUIT BAG

MATERIALS

DIMENSIONS (mm)

MONOLAYER

EXTERNAL

HEIGHT

PET

185 x 185

H 70

PET

185 x 185

H 90

PET

185 x 185

H 120

PET

185 x 185

H 150

PET

185 x 185

H 160

PET

239x163 x 141

H 160

LINEA TF - ALL FRUITS

FRUIT TRAY

RESEARCH, TECHNOLOGY AND ENVIRONMENT

In order to stand out from competitors, Tecnopress deploys the will, resources and skills with the aim to studies new solutions in terms of materials, shapes and performance to assure its customers the right cost benefit ratio.

Research and development is furthered by the conviction of its importance, the highly skilled staff and the presence of adequate laboratory instrumentation that makes use of the latest technologies to characterize and control the main parameters of raw materials, films and thermoforms.

SUCCESS DEPENDS ON CHOICES.
GOOD CHOICES

TECNOPRESS srl

registered office: via Newton,37
47025 Mercato Saraceno (FC)
Tel. 0547 90158 | Fax. 0547 91200

operational
headquarters: zona industriale Villa Zaccheo
64020 Castellalto (TE)
Tel. 0861 296017
tecnopress.biz